



Level Devil®

9234 Mobile Tank Monitor: Local Display & (optional) Remote Monitor

DESCRIPTION

The *ES I / Level Devil® Model 9234* liquid level gauge is a **battery-powered local display and controller** that mounts on a tank, or near it – measuring liquid levels with a **hydrostatic pressure sensor**. The pressure sensor, on the end of the cable, may enter the tank from the top (submerged in the liquid), or may be connected to a port opening on the exterior of the tank, at its base.

The 9234 is a local display, but also offers **options**, including **cellular reporting to a datacenter, which relays the data to you** via a secure website, e-mail, text message, or automated voice phone call. *ES I* offers this service affordably. An option transmits the unit's **GPS location** to you. Antennas are internal.

The weatherproof display (and 4 mounting brackets) are made of non-corrosive material. Sensor cables are available in various lengths, for mission flexibility..

OPERATION

Normal Operation: The base unit is normally in battery-save mode, but by pressing a button, the unit displays the current level in the tank: inches, cm, gallons, pounds, etc. and then returns to battery-save mode. The display can be forced to stay on by pressing another button.

Web and Text Posting options enable the unit to post new data on the *Level Devil* web site, or on our App (downloadable to your smartphone), as an on-demand posting, or reports at a timed interval, or when alarm set-points are reached..

GPS Reporting option can be triggered by **1:** local display panel; **2:** timed reporting; **3:** Web site request; **4:** an operator at the *ES I* datacenter. Upon calculating its global position, the GPS can send its coordinates for logging and viewing on a map.



ES I Level Devil 9234 Tank Monitor (lower left) mounted on fluid tank on wood platform. Sensor shown in pipe between monitor and sight tube. Kit includes mounting brackets to fit 3/8" screws.



Electronic Sensors, Inc.
2063 S. Edwards, Wichita, KS 67213
Phone: 316-267-2807 Toll Free: 800-886-2511
Fax: 316-267-2819 Email: sales@leveldevil.com



www.leveldevil.com



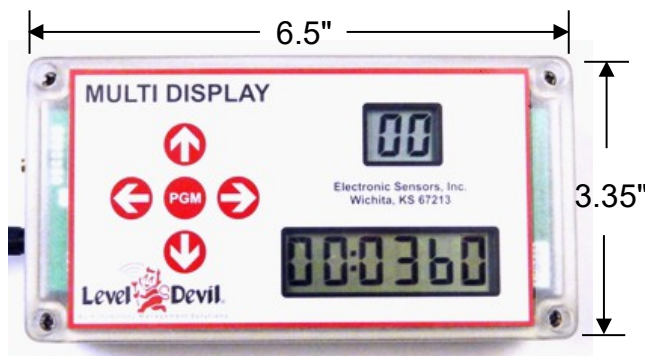
9234 Mobile Tank Monitor: Local Display & (optional) Remote Monitor

9234 DESIGN

The 9234 is a rugged, reliable, monitor, and optional RTU (remote transmit unit), housed in a weather-resistant, compact, PVC case that fits where other monitors cannot.

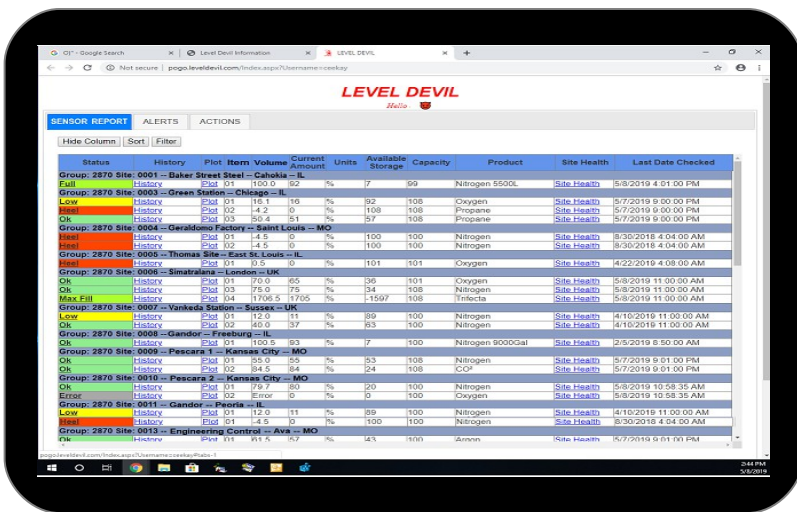
9234 SPECIFICATIONS (subject to change without notice)

Parameter	Value & Remarks
Monitoring ability	1 sensor; (optional: GPS location)
Items shipped	1- sensor with cable 1- display with 4 mounting clips
Temperature Range	-40°F to 140°F (-40°C to 60°C)
SENSOR:	
Pressure Range	0 to 5 PSI. Others available.
Output	0.5 to 2.5 VDC
Housing material	SS316L
Port Fitting	NPT ¼ Male
Excitable Voltage	3.3 to 3.6 VDC
Cable Length	6.56 feet (2 meters)
Cable Material	PE

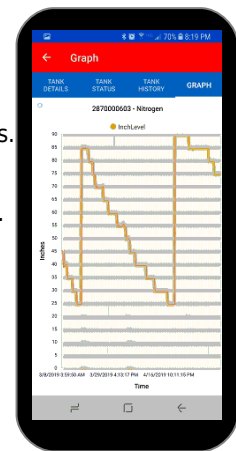


Parameter	Value & Remarks
DISPLAY:	
Number of Digits	2 digits top display 6 digits bottom display
Digit Size	.6 inches (1.5 cm)
Case Size	6.5 x 3.35 x 2.2 inches (16.5 x 8.5 x 5.6 cm)
Case Material	PVC, UV stabilized
Battery (ESI P/N: BHPC)	Lithium 3.6V with cellular ampere buster.
Battery Access	4-screws, front of case

REMOTE INDICATION (optional)



- Secure web screens visible by authorized client from any computer or smart phone.
- Client can allow Selective Password Access by others.
- Smart phone App available.
- Automated Voice Phone Calls.
- History Data and Graphs.
- High/Low Alarms/Indications.
- Sudden-Change Notification.
- GPS Location Reporting.
- User-defined Configuration and Settings.
- Sort and/or Filter Data by Item, Date, Status, etc.



Electronic Sensors, Inc.
 2063 S. Edwards, Wichita, KS 67213
 Phone: 316-267-2807 Toll Free: 800-886-2511
 Fax: 316-267-2819 Email: sales@leveldevil.com

